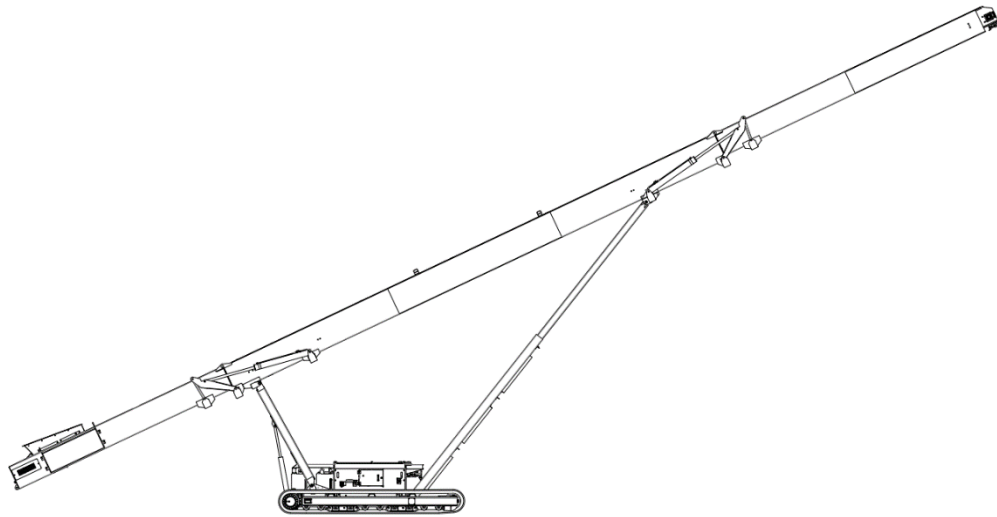


## TECHNICAL SPECIFICATION

Origin C6000T – TRACKED CONVEYOR



# ORIGIN C6000T – TRACKED CONVEYOR



Introducing the ORIGIN range from Telestack – an entry level range of products that embodies the original Telestack ethos –reliable design and good workmanship - but without the extras. Although more basic in design, the Origin range maintains the ability to achieve impressive stockpiling ability and is ideal working after a screen in crushed aggregate, sand, or top soil application.

The ORIGIN C6000T is a track mounted fully mobile stockpiling conveyor. Powered by a diesel engine it is self-contained and offers an excellent stockpiling capacity. As mobile crushers and screens constantly get larger with increased throughputs, transport restrictions have not allowed for their on board conveyors to increase in size and length to cope with higher tonnages. Track conveyors fulfil this need by providing much larger stockpile capacity and at the same time improve plant mobility by removing material from the processing equipment.

## C6000T – TYPICAL APPLICATIONS

- Stockpiling from secondary crushers, screens and shredders.
- Stockpiling crushed stone, sand and gravel, mineral ores, mulch, woodchip/biomass.
- Stockpiling construction and demolition waste, top soil, coal, grain etc.
- Receiving crushed material and stockpiling safely over a quarry face/bench.
- Working as part of a mobile system on short to medium term projects.
- Ship and truck loading.

## C6000T – KEY FEATURES

- High throughput with typical tonnages up to 300 tph (330 Ton per hour)
- Maximum distance between tracks and head drum, for optimum stockpiling capacity
- Maximum lump feed size of up to 75mm (3")
- Front and rear adjustable telescopic to obtain desired discharge or feed in height
- Engine protection shutdown system
- Counter weight built into feed boot area to give integral strength and stability in working position.
- Folding head section for ease of transport
- Paint specification, Cream: RAL 7032, Red: RAL 3001
- Options available

## C6000T – KEY ADVANTAGES

- Removes the need for a dedicated wheel loader to constantly remove material from the crusher, screen or shredder.
- Reduces fuel cost by up to 75%
- Reduces operating cost by up to 70%
- Removing / reducing loading shovel movements reducing operating cost.
- Reduces screener idle time increasing production.
- Reduces face excavator idle time increasing production.
- Production rates of up to 300 tph (330 Ton per hour)
- Hydraulic folding head section allowing for compact road transportation.
- Typical set up time of under 10minutes.
- Hydraulic tail section height adjustment whilst at the same time maintaining head drum height ensuring maximum stockpile capacity.
- High specification machine designed for ease of maintenance commanding an excellent resale value at project conclusion.

## C6000T – STOCKPLING CAPACITIES

All stockpiling capacities are calculated based on material, with a bulk density of 1.6 tonnes per m<sup>3</sup> (100 lb/ft<sup>3</sup>)  
Stockpile angle of repose 37°

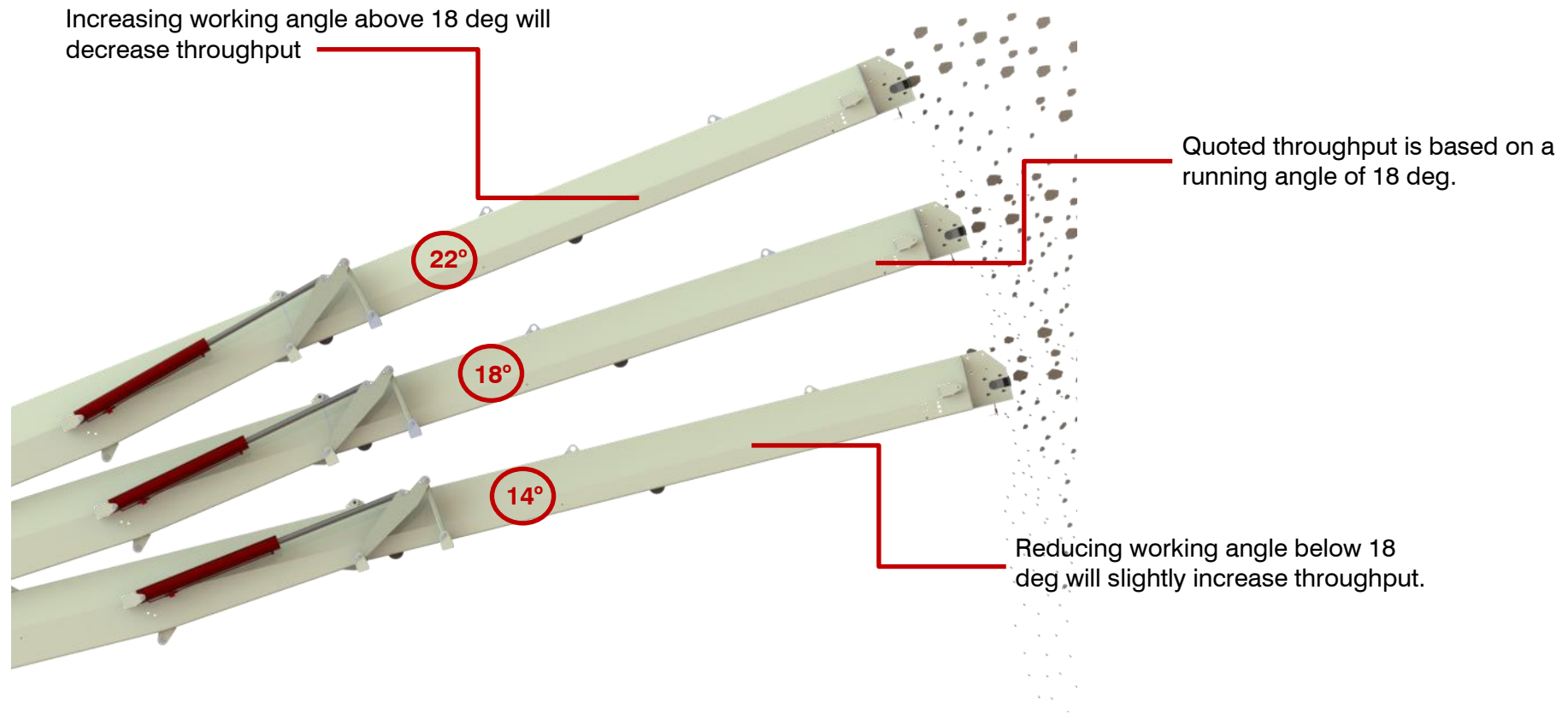
### Conical Stockpile Capacities

Angle of Conveyor Belt (Degrees)	Stockpile Height		Stockpile Capacity (Volume)		Stockpile Capacity (Mass)	
	(m)	(ft)	(m3)	(yd3)	(Tonnes)	(Ton)
22°	11.08	36' 4"	2,508	3,281	4,016	4,425
20°	10.4	34' 2"	2,075	2,715	3,320	3,660
18°	9.72	31' 11"	1,695	2,215	2,710	2,990
16°	9.02	29' 7"	1,355	1,770	2,165	2,390
14°	8.32	27' 4"	1,062	1,390	1,700	1,875
12°	7.62	25'	815	1,070	1,305	1,440

**Note:** All quoted tonnages and capacities are based at a recommended operation angle of 18°, with the higher degrees of inclination only adequate for materials with a lower bulk density.

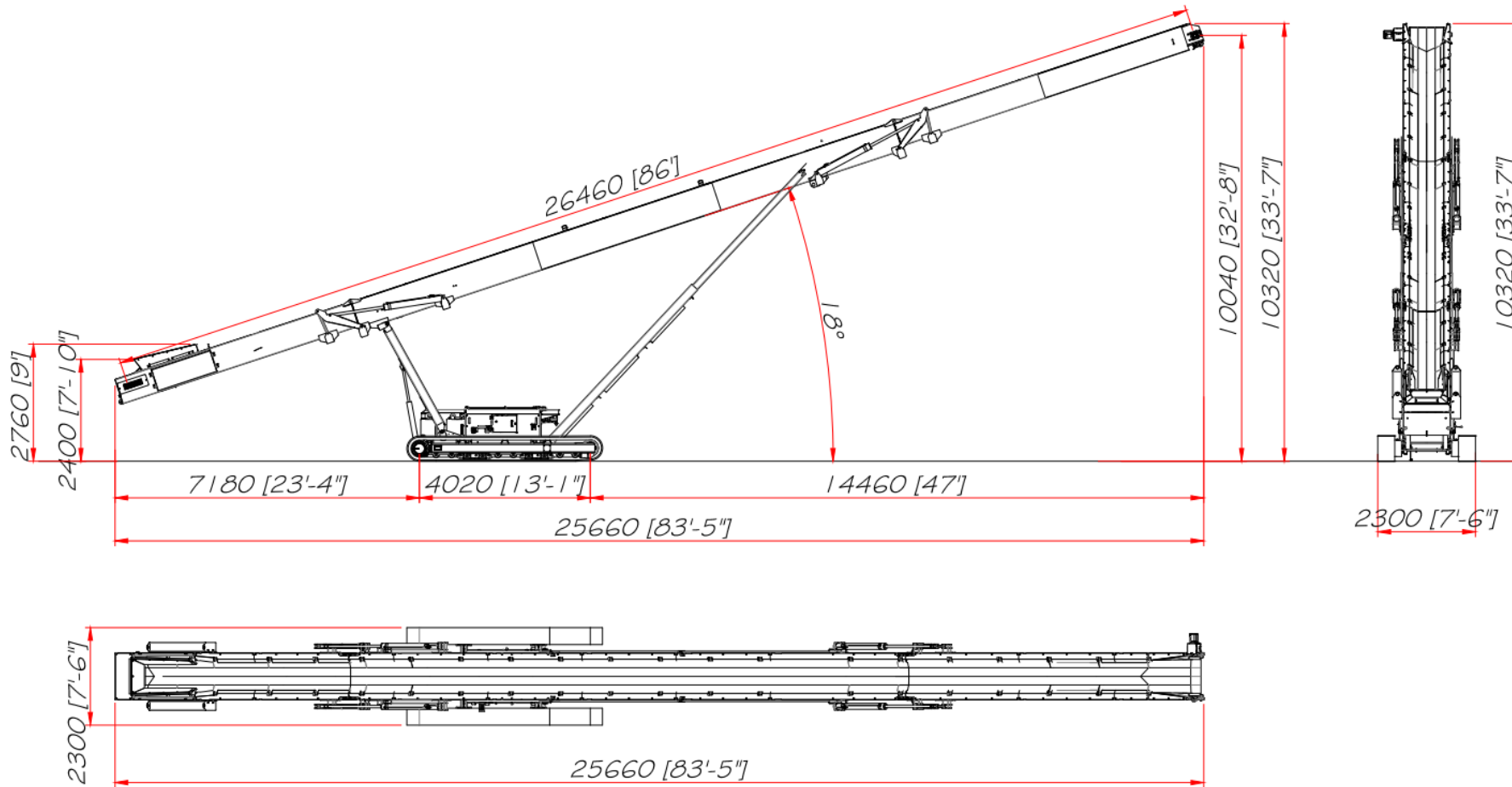
# THROUGHPUT - EXPLAINED

Telestack throughputs are primarily based on a typical running angle of 18°. Depending on selected angle of operation throughput will vary.



Feed method, material characteristics and environmental conditions can affect throughput, overall performance and maximum working angle.

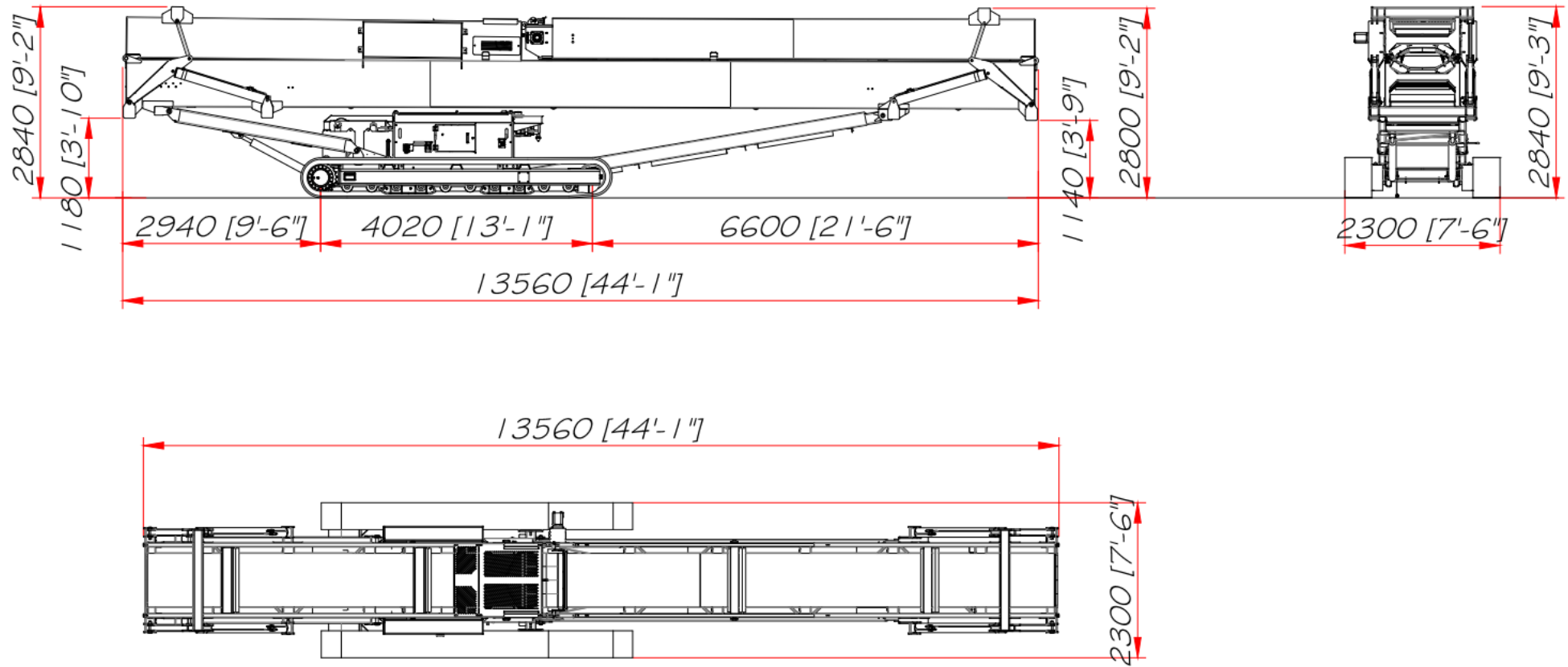
# ORIGIN C6000T - WORKING DIMENSIONS



	Metric	Imperial
Machine Working Length (18°)	26.46m	86'
Discharge Height (18°)	10.04m	32' 8"
Feed in Height (Rear)	2.40m	7' 10"
Operating Width	2.3m	7' 6"

THE POWER TO MOVE MATERIALS

# ORIGIN C600T – TRANSPORT DIMENSIONS



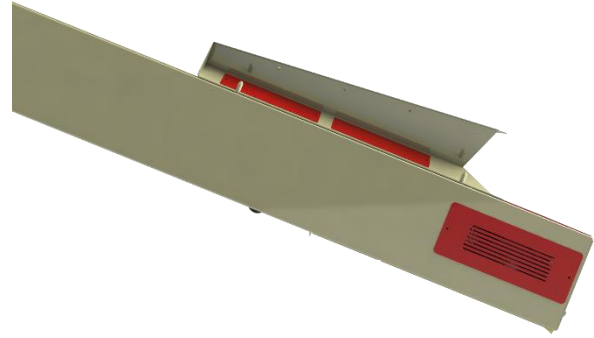
	Metric	Imperial
Transport Length	13.56m	44' 1"
Transport Width	2.3m	7' 6"
Transport Height	2.84m	9' 3"
Overall Weight	14,400 Kg	31,746 lbs

Unit can also be transported in a 45' High cube container. / 45' Euro Liner

# C2000T – MACHINE FEATURES

## Feedboot

- Tapered feed boot design, with large material target area
- Adjustable rear telescopic for variable feed in height.
- Width – 0.9m (3')
- Length – 1.5m (5')
- Steel - 4mm
- 102mm (4") troughing rollers, spaced closely together



## Incline Conveyor

- Heavy duty folded mild steel plate design. The folded plate design gives an optimum strength to weight ratio.
- Hydraulic folding head as standard
- Standard 800mm (32") wide EP 250 2 Ply, 3mm+1.5mm Belting,
- Belt Speed 2.3m/s- (452ft/min) empty.
- 102mm (4") diameter troughing rollers set.
- Wing roller angle adjustable.
- Head fold by hydraulic lever.
- 102mm (4") plain return rollers. Includes profiled steel nip guard as standard plain
- High torque, direct drive orbital motor. Single drive. Conveyor raise lower by hydraulic lever.
- Head fold by hydraulic lever.



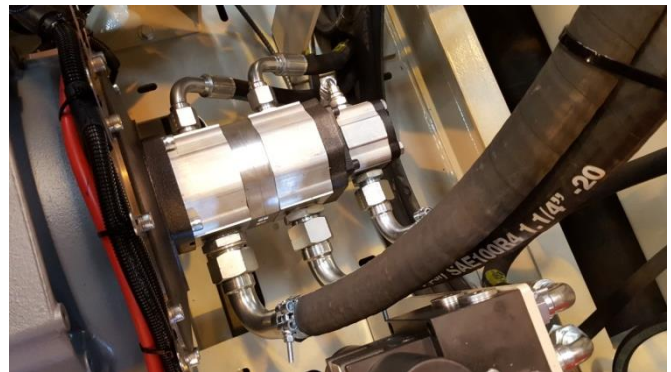
## Chassis

- Heavy Duty FL4 Tracks
- Longitudinal centres: 4000mm (13' 1")
- Track shoe width: 400mm (16")
- Track Drive: Two integral hydraulic motors
- Tensioning: Hydraulic adjuster, grease tension
- Tracking: Push button pendant type (dog lead)
- Maximum Speed of tracks: 1.3kph (0.81 mph). Full Revs.
  
- Heavy duty structural steel chassis, with integrated webbed plate design for the rear telescopic mountings.
- Large, lockable canopy access doors for ease of operation and maintenance.



## Hydraulics

- Tandem pump system
- Easy access for maintenance to all hydraulic components such as pumps, filters, tanks, valves etc
- Steel fabricated hydraulic tank complete with fill level gauge and lockable filler cap.
- Capacity: 180 litre (47 US gallons)
- Oil type: Grade 32
- All conveyor functions by hydraulic lever. Raise / Lower Head and tail, Start / stop belt, head fold / unfold.



# Engine & Control

## Standard/EU Stage V /USA Tier 4

- Deutz TD2.2 L3 Electronic 3 Cylinder, 36.9KW (50HP) @ 2200 RPM

## EU Stage IIIB/USA Tier 4

- Deutz D2.9 L04i, 36.4kW (50Hp) @ 2200 Rpm

## Unregulated Countries

- CAT Tier 3/Euro IIIA, 2.2, 37kW (50Hp) @ 2200 Rpm
- Deutz L03i, 3 cylinder, 2011, Air cooled, 28.8 kW (38 Hp) @ 2200 rpm

## Telestack Universal Panel

- Start-up system with safety features (fully fused at the battery and fault display on IFM HMI).
- Engine monitoring and system control including tracking and start/stop conveyor
- Standard electrical PCB master module technology with led indication for faulty components
- Faults are displayed on IFM HMI.
- One place label using standard symbols.
- Full frequency certified CE, FCC, AU and Japanese remotes systems.
- Panel mounted in secure canopy with lockable doors.
- Pendant / Dog lead for tracking with 8m cable

## Diesel Tank

- Steel fabricated fuel tank complete with fill level gauge and lockable filler cap.
- Capacity: 180 litres (47 US gallons)



# ORIGIN C6000T – OPTIONAL EXTRAS

---

The C6000T is an entry level track conveyor so options on this model are limited. Basic design has been kept basic and uncomplicated so certain options available on other Telestack equipment is not available on this model. Please consult with Telestack if you have any queries.

## Bolt in Feed boot Liners

- **Option 1:** Bolt in 6mm (1/4") steel wear liners.
- **Option 2:** Bolt in 6mm (1/4") hardened steel wear liners.

## Feed boot extensions. (Bolt on)

- 380mm bolt on feed boot extensions. Increased target area to 1200mm x 1560mm

## Conveyor Side Skirting

- Under belt skirting plates with low friction liner to reduce drag. Does not need adjusted or reset when the conveyor is folded.

## Belting Upgrade

- 800mm (32") 3 ply EP400 x 4 + 1.5mm

## Radio remote Control

- **Option 1 (Basic remote)** Radio remote control to Track, and Start Stop the belt. (Head fold, raise / lower head and tail not included). Note this option requires an upgraded panel and loom.
- **Option 2 (Extra function remote)** Radio remote control to Track, and Start Stop the belt. Raise / Lower head and tail (Head fold not included). Note this option requires an upgraded panel and loom, additional solenoids and upgraded hydraulic circuit.

## Oil Cooler

- 1 x Hydraulic oil cooler suitable for hot climates / machines that are expected to track long distances. Note this option requires an upgraded panel and loom, additional solenoids and upgraded hydraulic circuit.

## Rollers

- 102mm (4") Rubber covered impact centre roller with wing rollers

# ORIGIN C6000T – TRANSPORT INFORMATION

## Options

The Origin C6000T can be transported in a number of ways:

1. Unit on 1 x low loader / Ro Ro (with head section folded over)
2. Unit in 1 x Euro Liner (with head section folded)
3. Unit in 1 x 45' High Cube Container (with head section folded) NOTE: 45ft containers are specialised and cannot be handled by all ports. Please check with Telestack / shipping agent.



## Containerisation

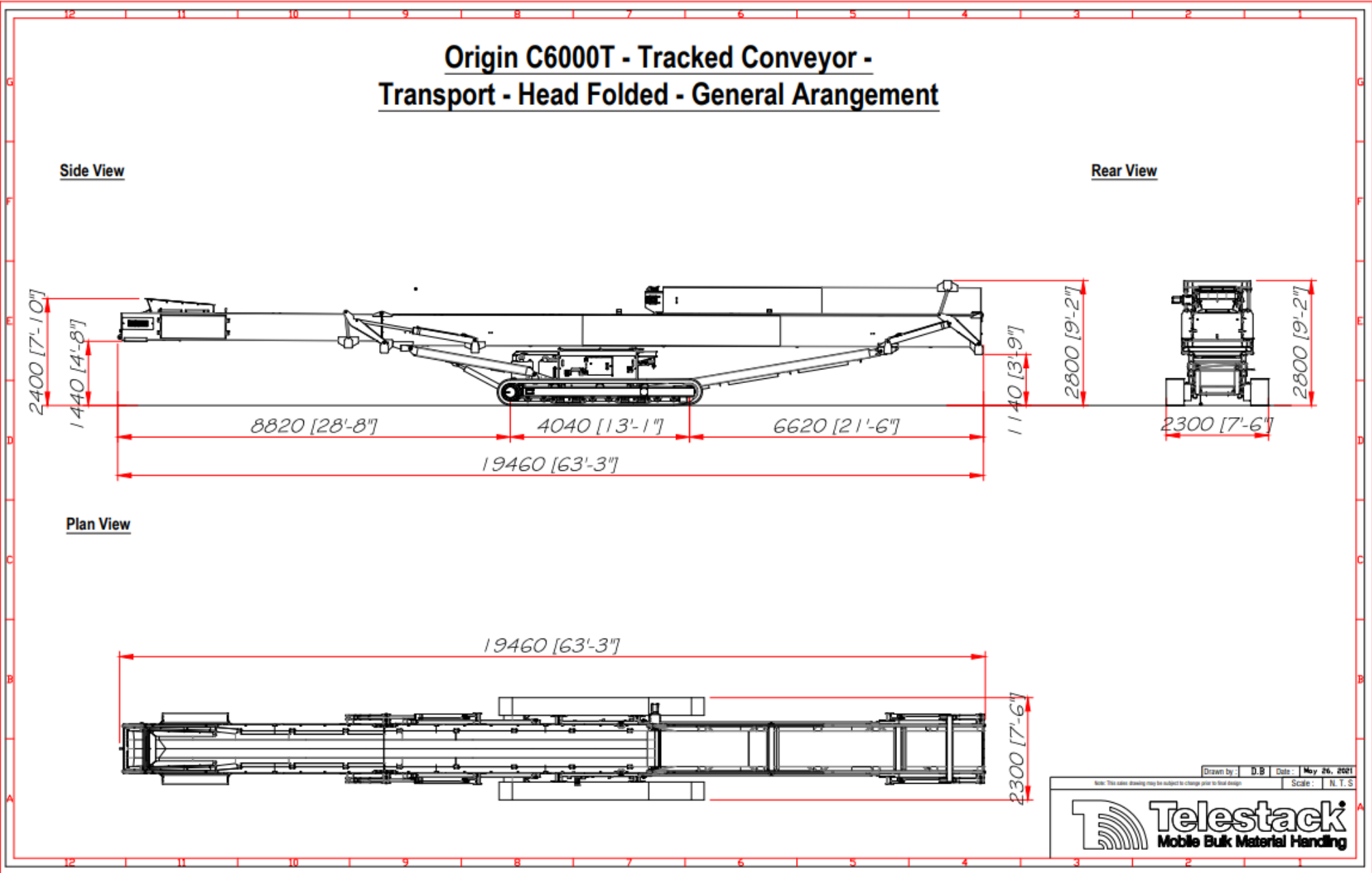
1. The Conveyor is transported in a 45'ft High Cube Container (Inside Dimensions Length-13.6m, Height-2.597m, Width-2.340m).
2. Conveyor must have Head and tail Section folded over. Feed boot removed.

On arrival to destination the customer must do the following

1. Enter container and start machine after reading safety instructions.
2. Track the unit from the container with the engine on its lowest rev setting.
3. When unit is removed from the container, fold the head and tail section using the hydraulic controls.

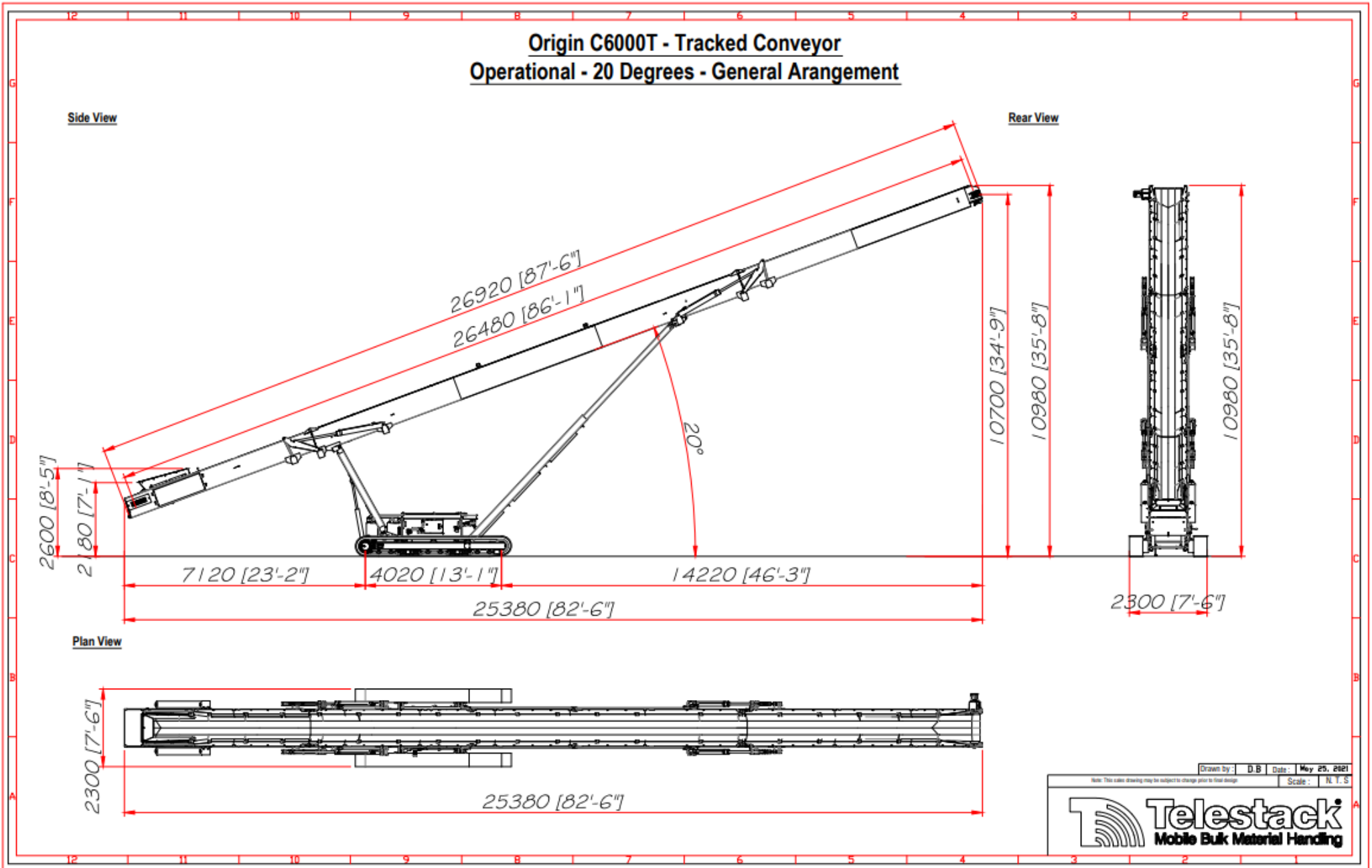
# ORIGIN C6000T – GENERAL ARRANGEMEN

## TRANSPORT VIEW – HEAD FOLDED



# ORIGIN C6000T - GENERAL ARRANGEMENT

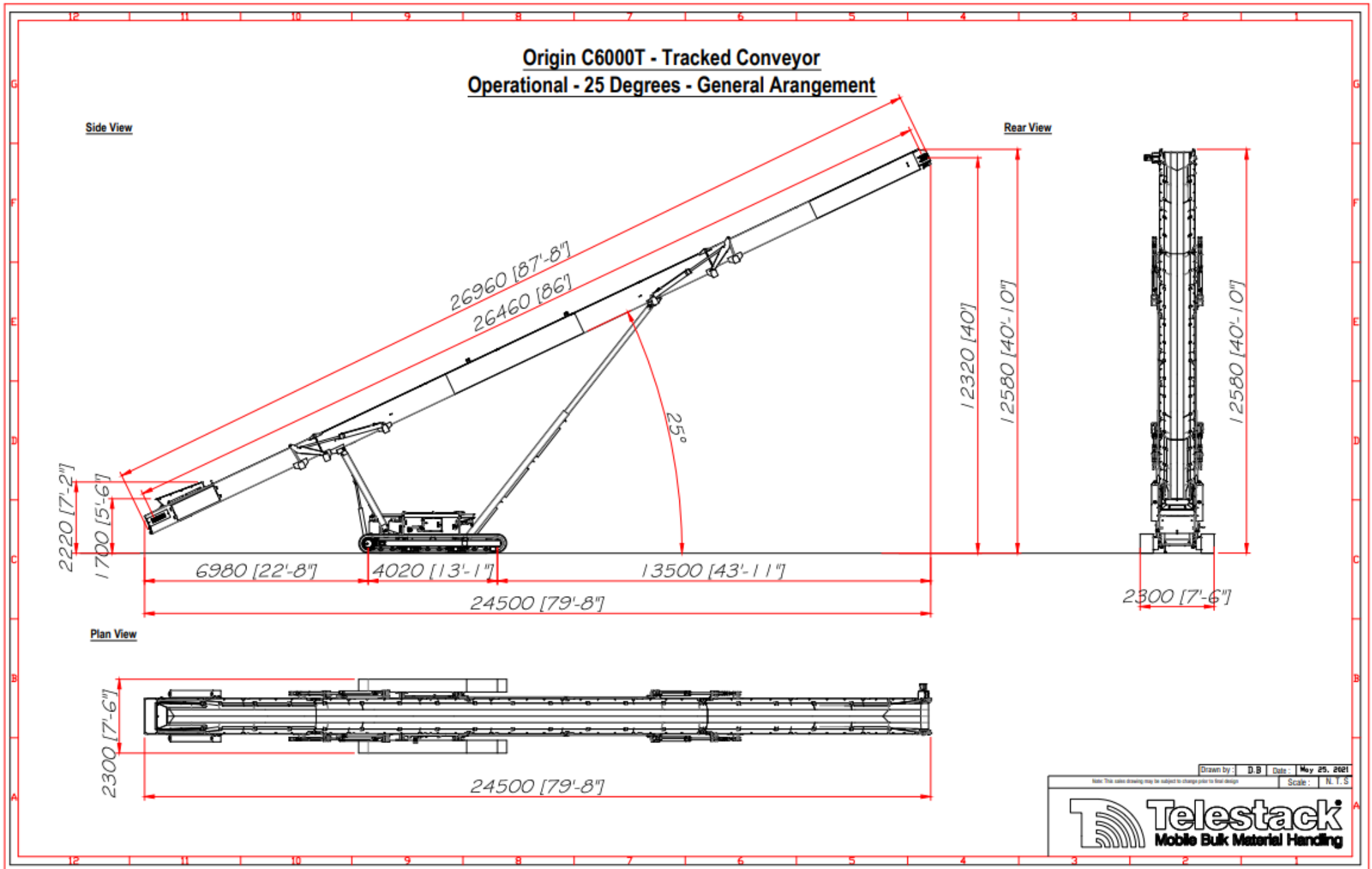
## OPERATIONAL - 20 DEGREES



# ORIGIN C600T – GENERAL ARRANGEMENT

OPERATIONAL – 25 Degrees

**Origin C600T - Tracked Conveyor  
Operational - 25 Degrees - General Arrangement**



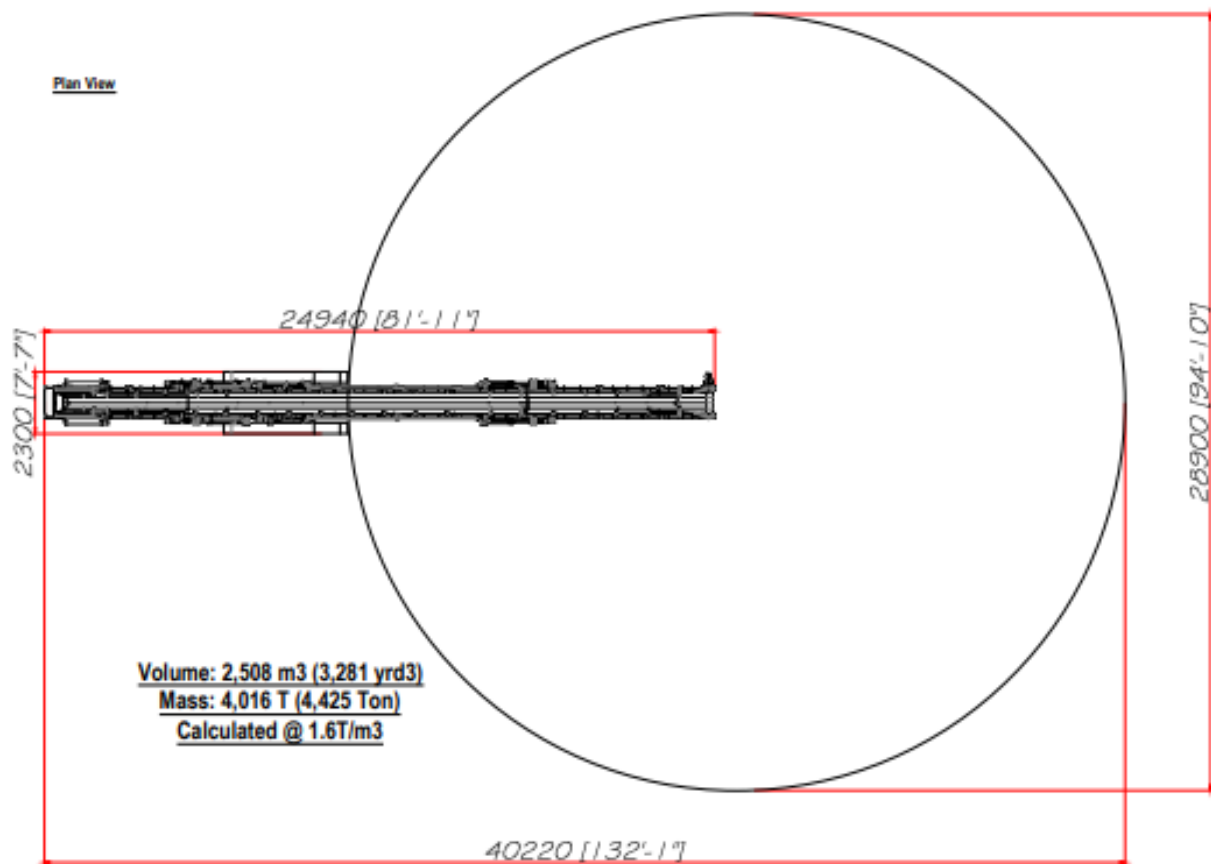
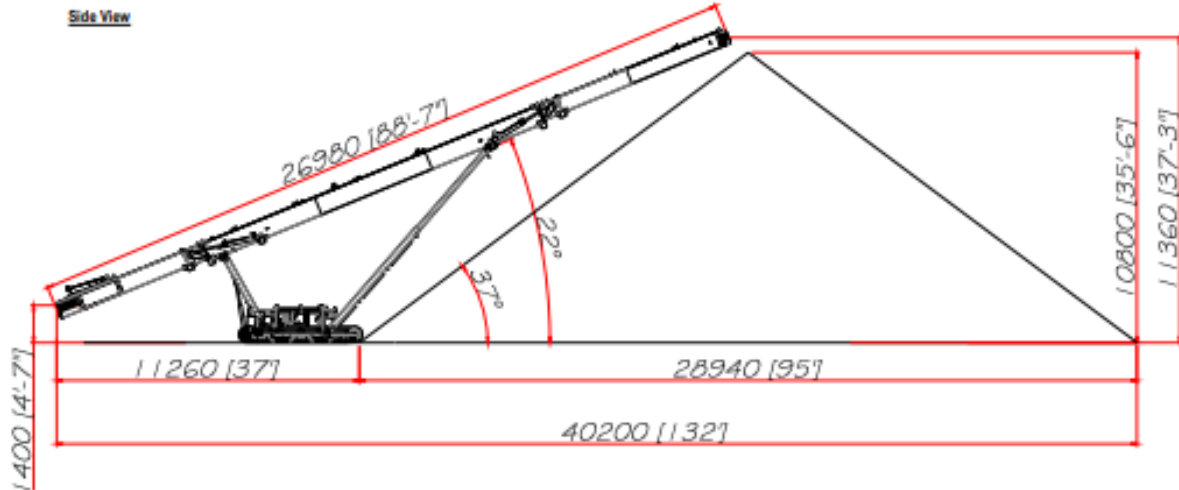
Drawn by: D.B | Date: May 25, 2021  
Scale: N.T.S.



# ORIGIN C6000T - GENERAL ARRANGEMENT

CONICAL STOCKPILE CAPACITY - 22 Degrees

**Origin C6000T - Tracked Conveyor**  
**Stockpile Volume (22 Degrees) - General Arrangement**



---

Telestack Limited  
Bankmore Way East  
Omagh, Co.Tyrone  
Northern Ireland  
BT79 0NZ

Tel: +44 (0) 2882 251100  
Fax: +44 (0) 2882 252211  
Web: [www.telestack.com](http://www.telestack.com)  
Email: [Sales@telestack.com](mailto:Sales@telestack.com)



**THE  
POWER  
TO MOVE  
MATERIALS**