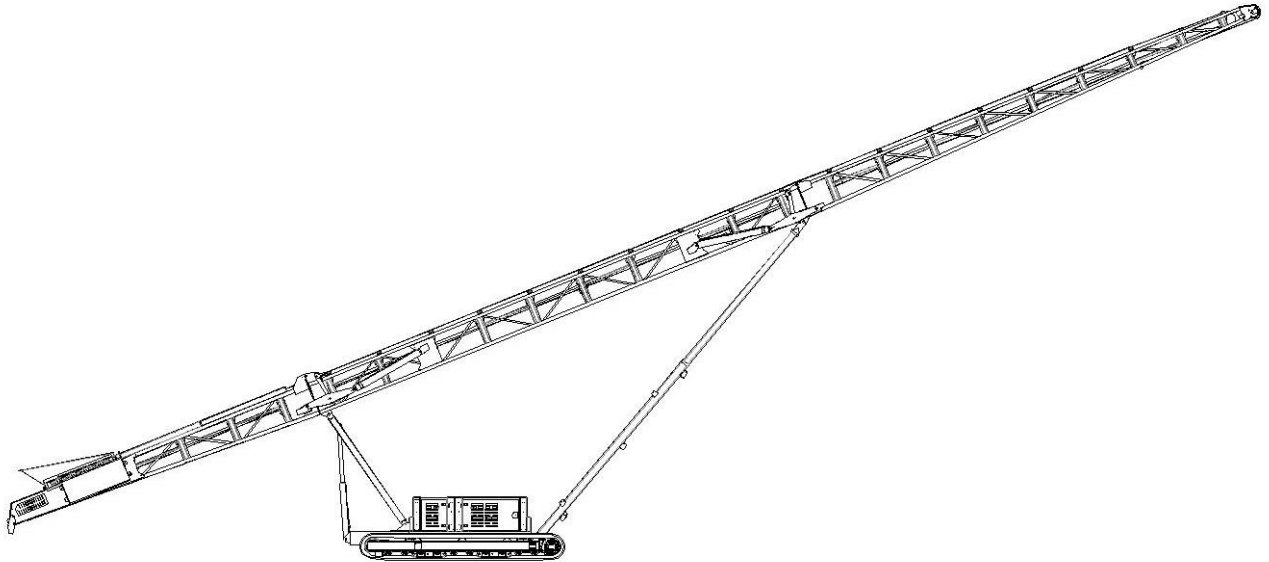


TECHNICAL SPECIFICATION

TCL 100 (42" x 100ft) – TRACKED CONVEYOR



TCL 100 – TRACKED CONVEYOR



The TCL 100 is a track mounted fully mobile conveyor. As mobile crushers and screens constantly get larger with increased throughputs, transport restrictions have not allowed for their on board conveyors to increase in size and length to cope with higher tonnages. Track conveyors fulfil this need by providing much larger stockpile capacity and at the same time improve plant mobility by removing material from the processing equipment.

TCL 100 – TYPICAL APPLICATIONS

- Stockpiling from secondary crushers, screens and shredders.
- Stockpiling crushed stone, sand and gravel, mineral ores, mulch, woodchip/biomass.
- Stockpiling construction and demolition waste, top soil, coal, grain etc.
- Receiving crushed material and stockpiling safely over a quarry face/bench.
- Working as part of a mobile system on short to medium term projects.
- Ship and truck loading.

TCL 100 – KEY FEATURES

- Maximum distance between tracks and head drum, for optimum stockpiling capacity
- Front and rear adjustable telescopic to obtain desired discharge or feed in height
- Engine protection shutdown system
- Counter weight built into feed boot area to give integral strength and stability in working position.
- Folding head and tail section for ease of transport
- Paint specification, Cream: RAL 7032, Red: RAL 3001
- Options available

TCL 100 – KEY ADVANTAGES

- Removes the need for a dedicated wheel loader to constantly remove material from the crusher, screen or shredder.
- Reduces fuel cost by up to 75%
- Reduces operating cost by up to 70%
- Removing / reducing loading shovel movements reducing operating cost.
- Reduces screener idle time increasing production.
- Reduces face excavator idle time increasing production.
- Hydraulic folding head section allowing for compact road transportation.
- Typical set up time of under 10minutes.
- Hydraulic tail section height adjustment whilst at the same time maintaining head drum height ensuring maximum stockpile capacity.
- High specification machine designed for ease of maintenance commanding an excellent resale value at project conclusion.

TCL 100 – STOCKPLING CAPACITIES

Conical Stockpile Capacities

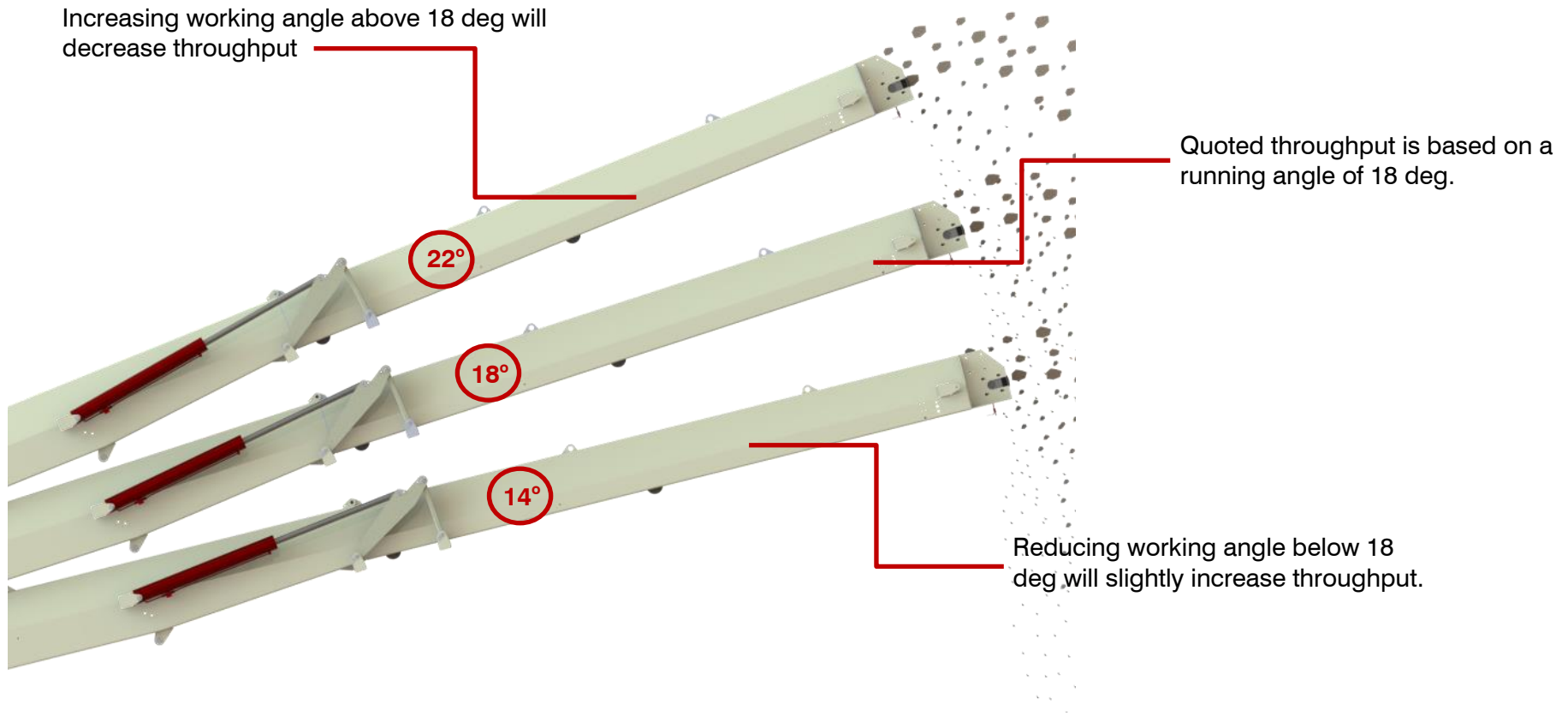
Angle of Conveyor Belt (Degrees)	Stockpile Height		Stockpile Capacity (Volume)		Stockpile Capacity (Mass)	
	(m)	(ft)	(m3)	(yd3)	(Tonnes)	(Ton)
28° *	14.58	47' 10"	4,010	5,240	6,410	7,060
26° *	13.72	45'	3,340	4,370	5,340	5,890
24° *	13.02	42' 9"	2,860	3,730	4,570	5,030
22°	12.3	40' 5"	3,440	4,490	5,500	6,060
20°	11.56	37' 11"	2,850	3,730	4,560	5,030
18°	10.82	35' 6"	2,340	3,060	3,740	4,120
16°	10.06	33'	1,880	2,460	3,010	3,320
14°	9.32	30' 7"	1,500	1,960	2,390	2,640
12°	8.54	28' 2"	1,150	1,510	1,840	2,030

Stockpiling capacities are calculated based on material with a bulk density of 1.6 tonnes per m³ (100 lb/ft³).
Stockpile angle of repose 37°.

* Stockpile angle of repose 42° - used when handling woodchips / mulch etc.

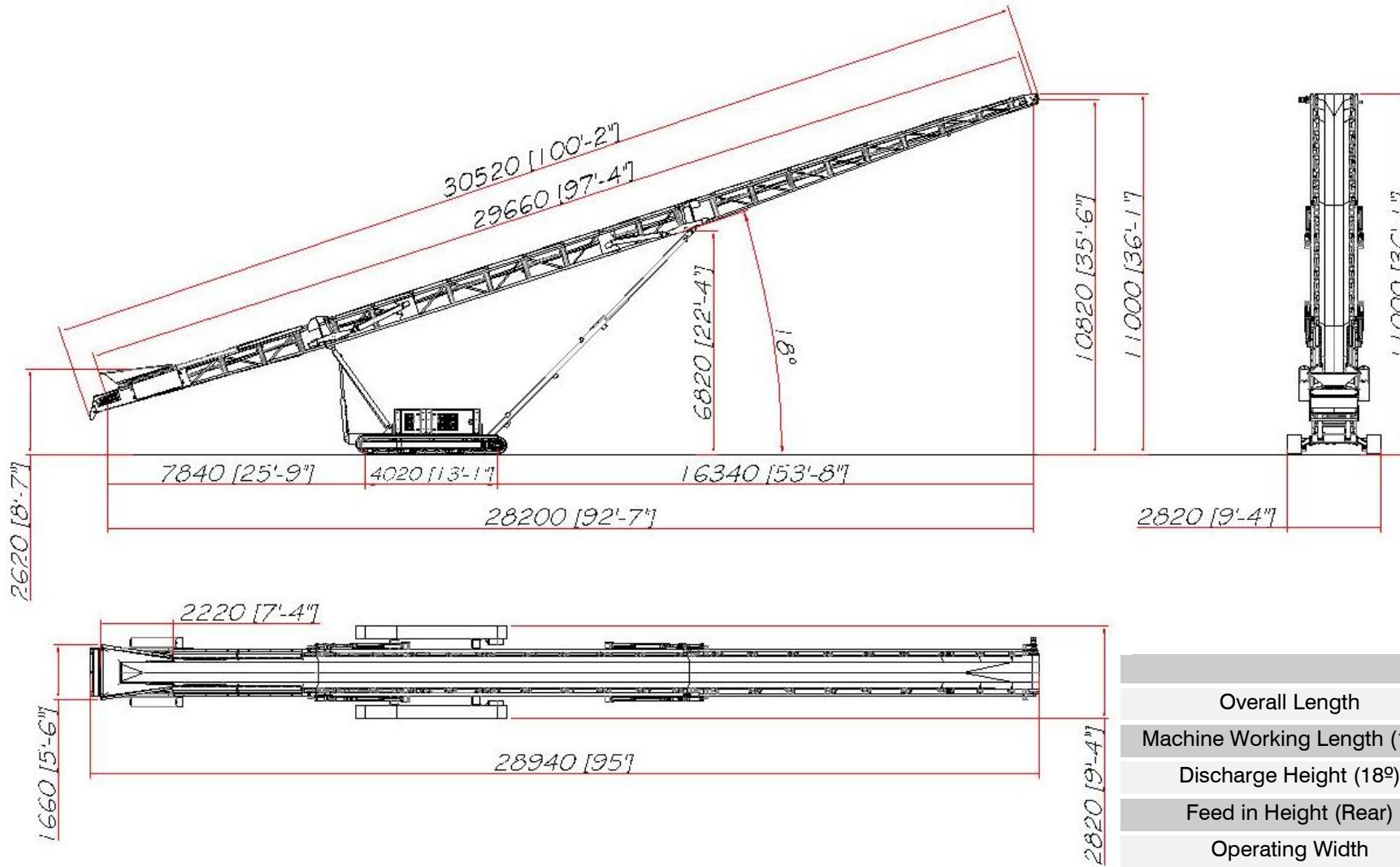
THROUGHPUT - EXPLAINED

Telestack throughputs are primarily based on a typical running angle of 18°. Depending on selected angle of operation throughput will vary.



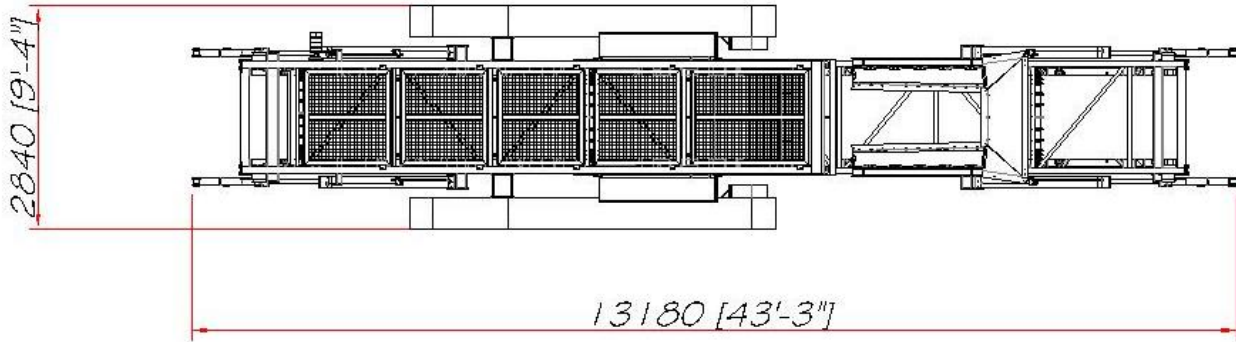
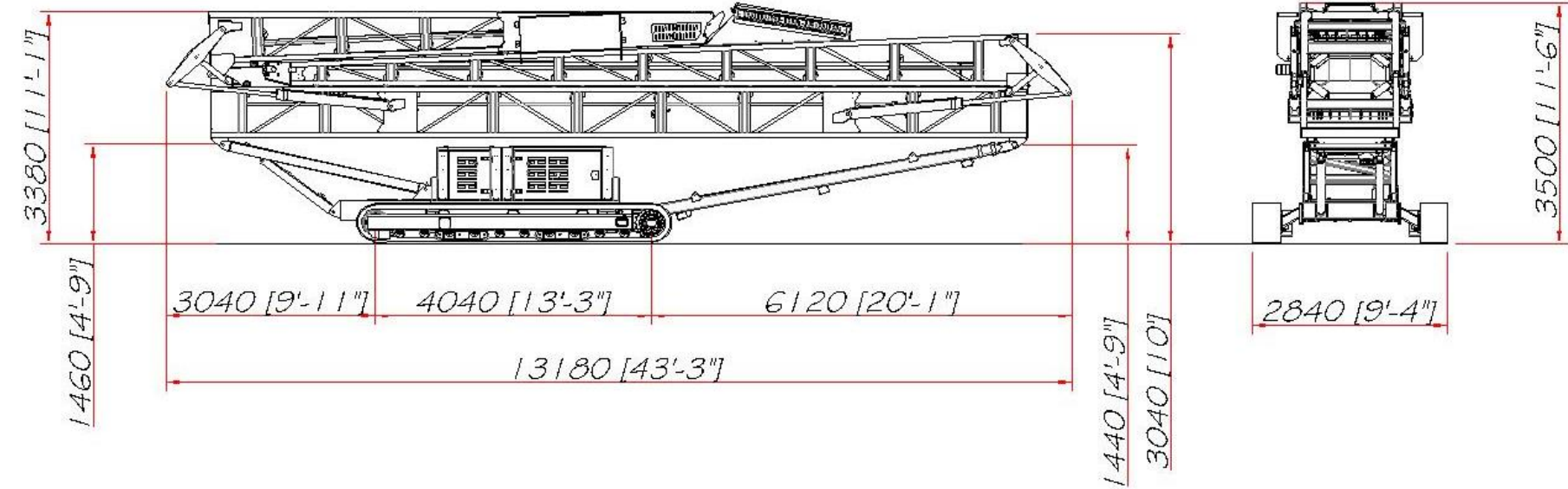
Feed method, material characteristics and environmental conditions can affect throughput, overall performance and maximum working angle.

TCL 100 – WORKING DIMENSIONS



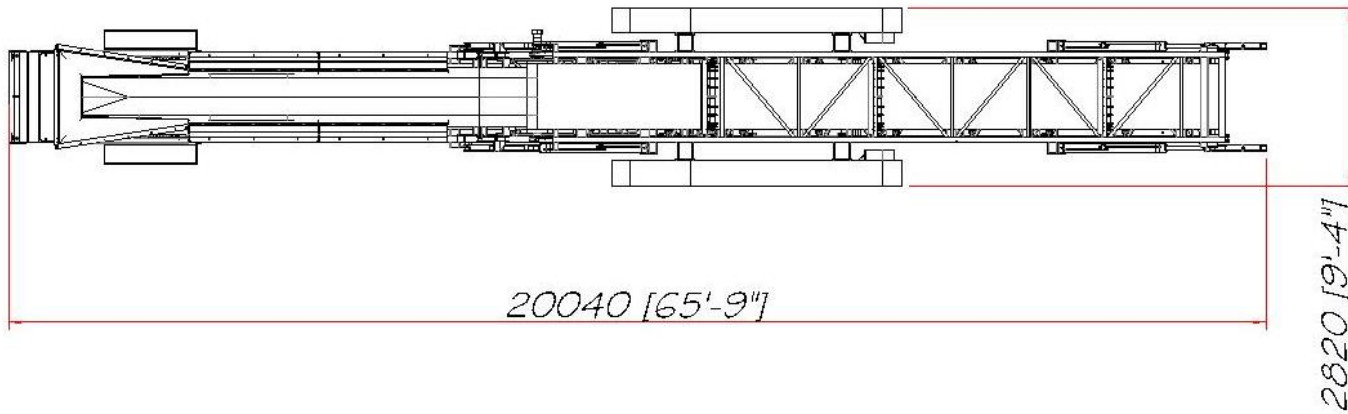
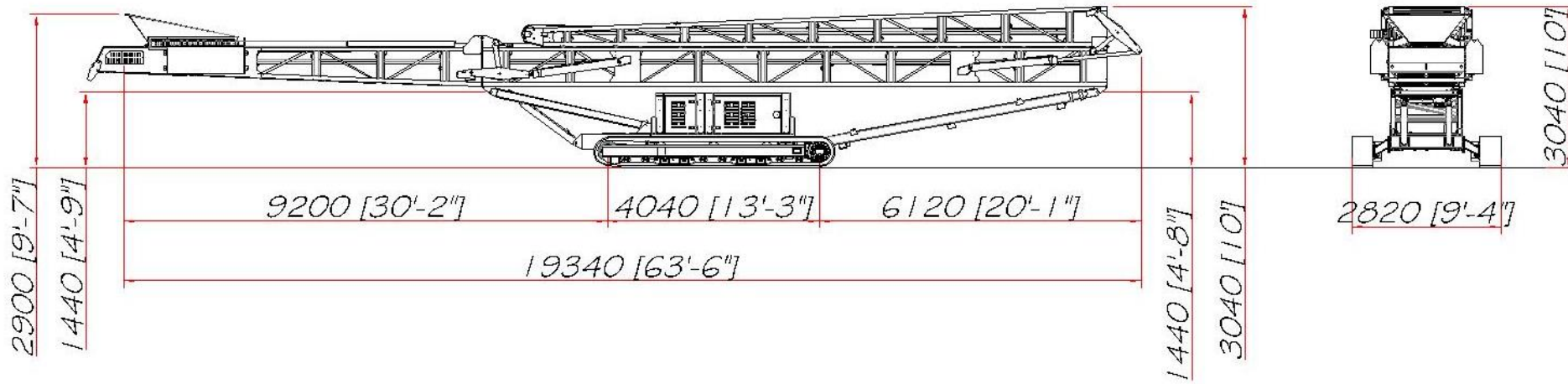
	Metric	Imperial
Overall Length	30.52m	100' 2"
Machine Working Length (18°)	28.94m	95'
Discharge Height (18°)	10.82m	35' 6"
Feed in Height (Rear)	2.62m	8' 7"
Operating Width	2.82m	9' 4"

TCL 100 - TRANSPORT DIMENSIONS (OPTION 1)



	Metric	Imperial
Transport Length (Head & Tail Folded)	13.18m	43' 3"
Transport Width	2.84m	9' 4"
Transport Height (Head & Tail Folded)	3.50m	11' 6"
Overall Weight	15,000 Kg	33,070 Lbs

TCL 100 - TRANSPORT DIMENSIONS (OPTION 2)



	Metric	Imperial
Transport Length (Head Folded)	20.04m	65' 9"
Transport Width	2.82m	9' 4"
Transport Height (Head & Tail Folded)	3.04m	10'
Overall Weight	15,000 Kg	33,070 Lbs

TCL 100 – MACHINE FEATURES

Feedboot

- Tapered feed boot design, with large material target area.
- Adjustable rear telescopic for variable feed in height, with hydraulic support legs under the feed in area
- Feed in (Min) - 1.84m (6')
- Feed in (Max) – 2.82m (9' 3")
- Width – 1.66m (5' 5")
- Length – 2.22m (7')
- Steel - 6mm (1/4")
- Combination rubber lagged impact rollers and impact bars (Feedboot liners optional)



Incline Conveyor

- Heavy duty lattice frame design
- Hydraulic folding head and manual folding tail section for transport as standard
- Standard 1050mm (42") wide EP 400 3 Ply, 4mm+2mm. Plain Belt.

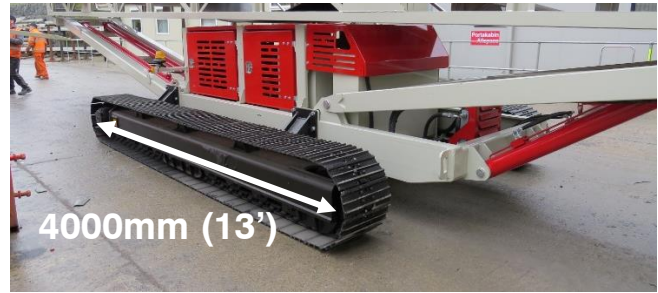
Belt Speed

- Belting. Run at 3.1m/sec (186m/min) – (610 ft/min)
- 102mm (4") diameter troughing rollers set.
- Wing roller angle adjustable.
- 150mm (6") diameter disc return rollers. Includes profiled steel nip guard as standard
- Single hydraulic orbital drive motors.



Chassis

- Heavy Duty FL4 Tracks
- Longitudinal centres: 4000mm (13')
- Track shoe width: 400mm (16")
- Drive: Two integral hydraulic motors
- Tensioning: Hydraulic adjuster, grease tension
- Tracking: Push button pendant type (dog lead)
- Heavy duty structural steel chassis, with integrated webbed plate design for the rear telescopic mountings.
- Large, lockable canopy access doors for ease of operation and maintenance.



Dual Speed Tracks

- Std. Speed of tracks: 0.84 kph (0.52 mph)
- Fast. . Speed of tracks: 1.5 kph (0.93mph)

Hydraulics

- Triple pump system
- Easy access for maintenance to all hydraulic components such as pumps, filters, tanks, valves etc
- Steel fabricated hydraulic tank complete with fill level gauge and lockable filler cap.
- Capacity: 250 litre (66 US gallons)
- Oil type: Grade 32



Engine & Control

EU Stage IIIB/USA Tier 4

- Deutz TD 2.9 L04i, Electronic, 4 Cylinder, 50kW (68Hp) @ 2200 Rpm
- CAT, C2.2 IPU, 50kW (68Hp) @ 2200 Rpm

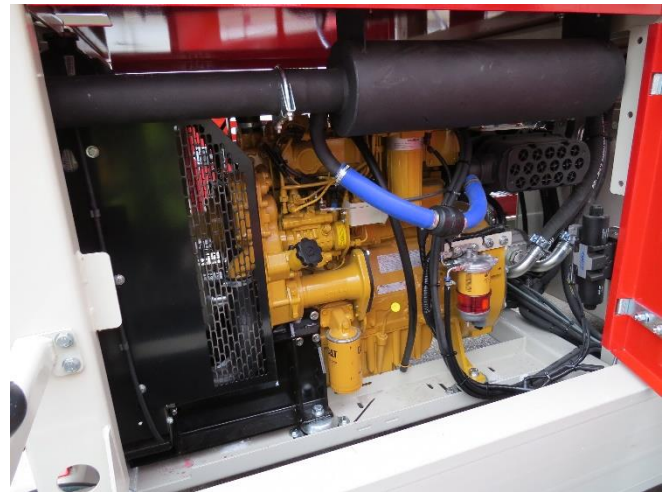
Unregulated Countries

- CAT, C2.2 Turbo, 44.7kW (59.9Hp) @ 2200 Rpm
- CAT C4.4 Mechanical, Water Cooled, Power: 75Kw (100Hp) @ 2200 Rpm

- Start-up system with safety features (fully fused and fault display).
- Engine monitoring and tracking system
- Standard electrical PCB microprocessor technology with led indication.
- Faults are logged on led indicators until resolved.
- LED indicator self test executed every time unit is switched on.
- One place label using standard symbols.
- Full frequency certified CE, FCC, AU and Japanese remotes systems.
- Panel mounted in secure canopy with lockable doors.

Diesel Tank

- Steel fabricated fuel tank complete with fill level gauge and lockable filler cap.
- Capacity: 160 litres (42 US gallons)



TCL 100 – OPTIONAL EXTRAS

Bolt in Feedboot Liners

- **Option 1:** Bolt in 20mm (4/5") rubber wear liners.
- **Option 2:** Bolt in 6mm (1/4") mild steel liners.
- **Option 3:** Bolt in 6mm (1/4") hardened steel wear liners.

Feedboot, Adjustable Feed Gate

- Adjustable feed gate to control the flow of material from the feedboot.
- With this option a front plate along the feedboot is also necessary which means it must be removed to fold the tail section.

Feedboot, Fall break System

- Bolt in fall break system to stop larger pieces in the material hitting the belt and causing damage to the conveyor.
- With this option a front plate along the feedboot is also necessary which means it must be removed to fold the tail section.

Feedboot, Flared Extensions

- Flared steel feedboot extensions to increase the target area and capacity of the feedboot

Feedboot, Straight Extensions

- Straight steel feedboot extensions to increase the target area and capacity of the feedboot.

Anti-Roll Back

- 4 x sets of anti roll back can be fitted to the incline conveyor to prevent material from rolling back down the belt when a steep inclines.

Belt Weigher

- Integrated belt weighing system, with control panel.
- Optional USB data logger.

Dust Suppression System

- Dust suppression system is used with materials that are likely to create a lot of dust.
- The system has dust covers running the full length of the conveyor and a head chute with rubber sock.

Hydraulic Folding Tail Section

- Hydraulic folding tail section for ease of transportation.

Overband Magnet

- An Overband magnet sits over the belt of the conveyor, removing harmful metallic contaminants from the main material

Conveyor Side Skirting

- Bolt on rubber side skirting up the length of the conveyor to avoid material spillage.

Remote

- **Option 1:** Radio remote control to start/stop incline and operate tracks.
 - **Option 2:** Radio remote control to start/stop incline, operate tracks and to raise/lower head and tail section.
-

TCL 100 – TRANSPORT INFORMATION

The TCL 100 can be transported by :

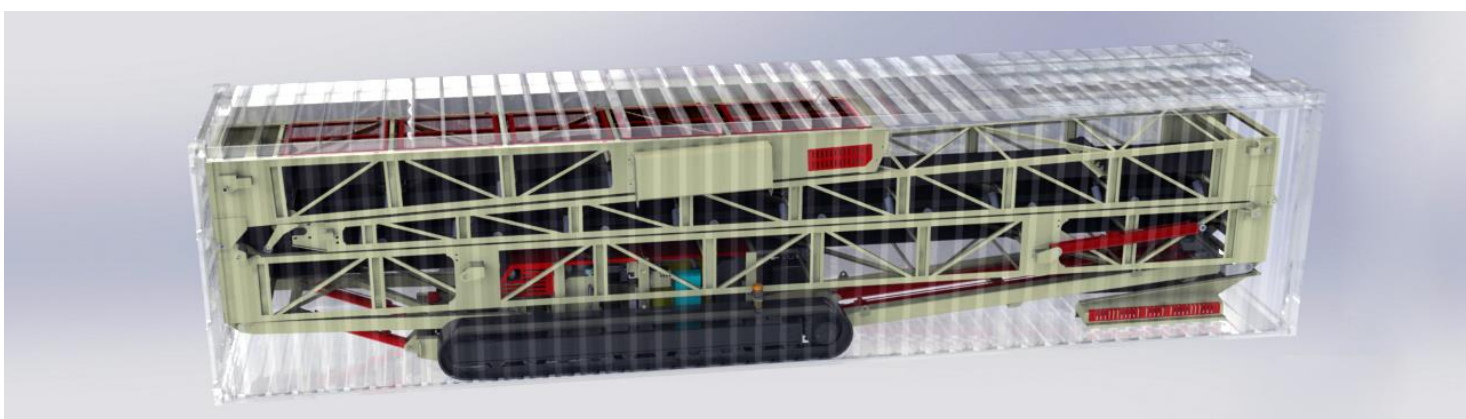
- Unit on 1 x Low Loader / Ro Ro (with head section & tail section folded over)
- Unit on 1 x Low Loader / Ro Ro (with head section only folded)



Container Transport

- Can also ship globally in 1 x 40ft high cube container. When it arrives the machine can track straight out of the container. Tracks need refitted and the conveyor must be raised to its normal working position. Power unit doors and feed boot to be fitted. Tail section manually folded if hydraulic tail fold option has not been selected.

(A full build procedure will be supplied with each machine prior to arrival)

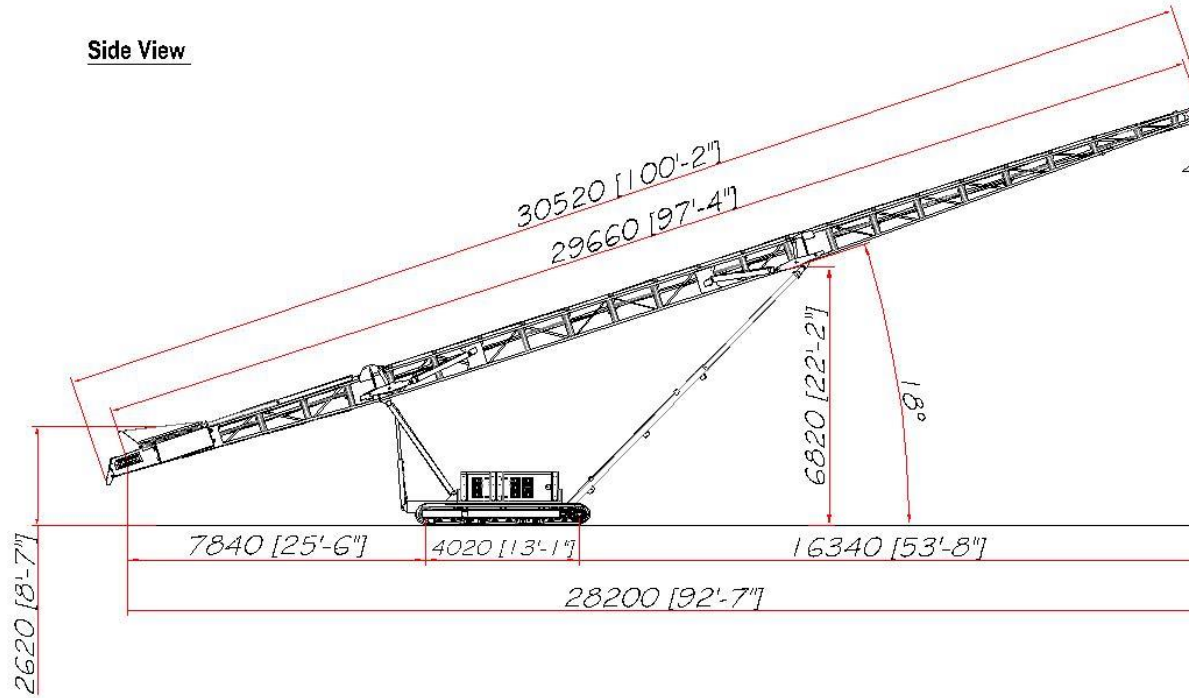


TCL 100 - GENERAL ARRANGEMENT

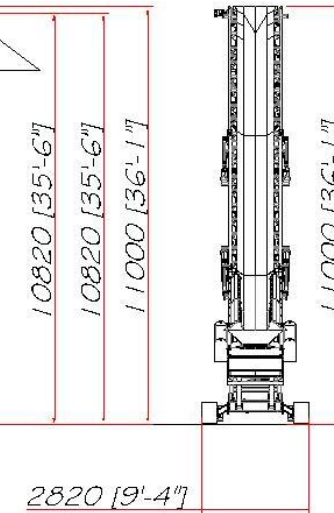
OPERATIONAL - 18 DEGREES

TCL 100 - 30m (100ft) Tracked Conveyor General Arrangement - Operational Position - 18 Degrees

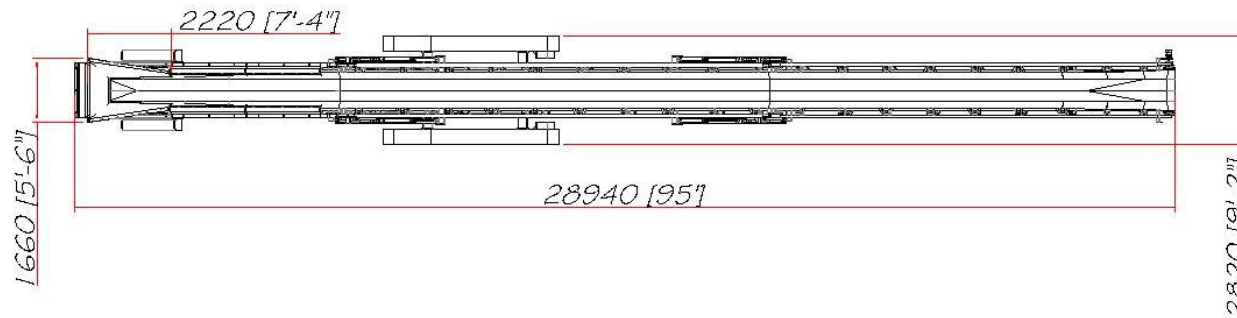
Side View



Rear View



Plan View



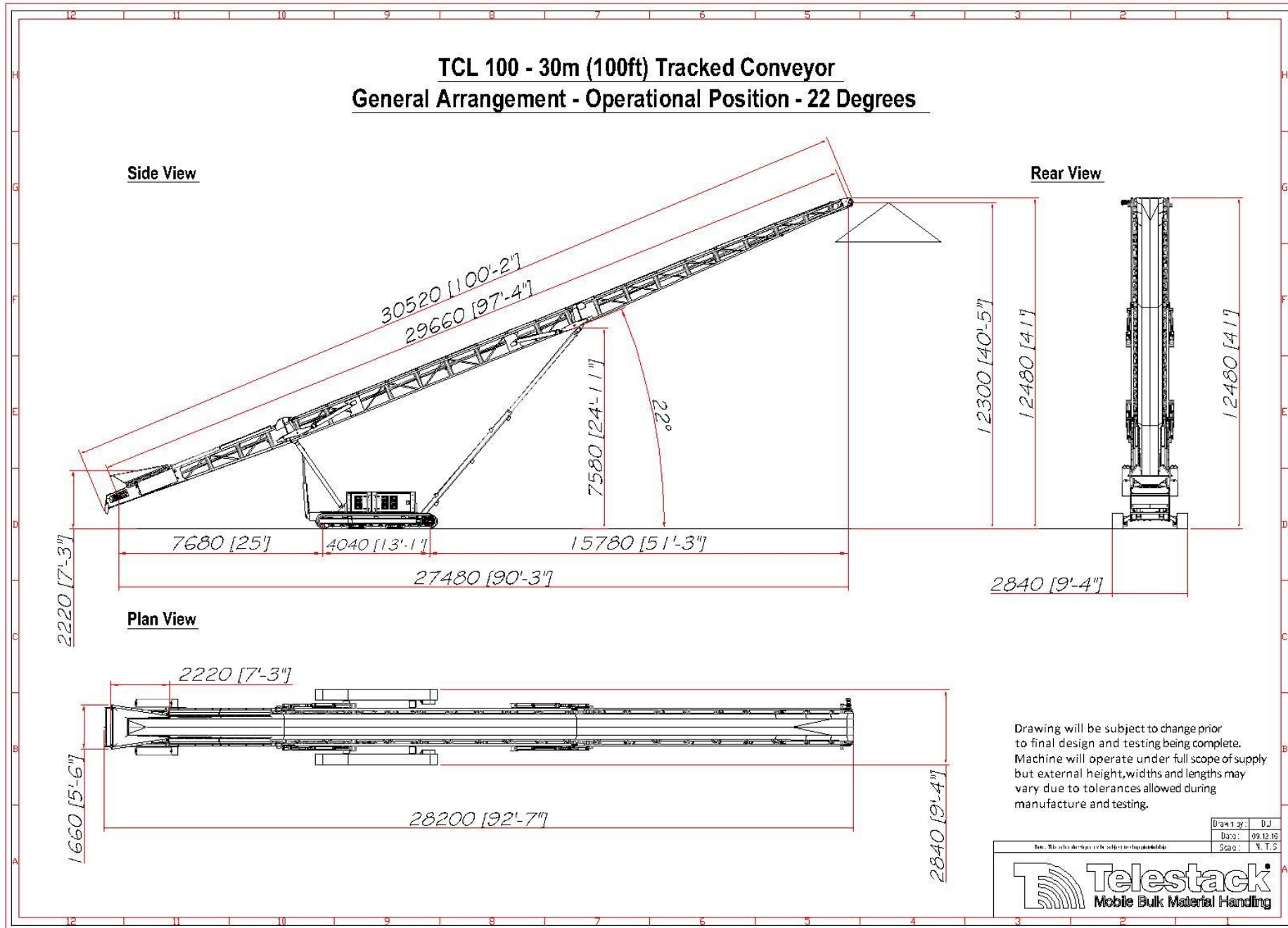
Drawing will be subject to change prior to final design and testing being complete. Machine will operate under full scope of supply but external height, widths and lengths may vary due to tolerances allowed during manufacture and testing.

Drawn by:	D.J.
Date:	09.12.15
Scale:	N.T.S.



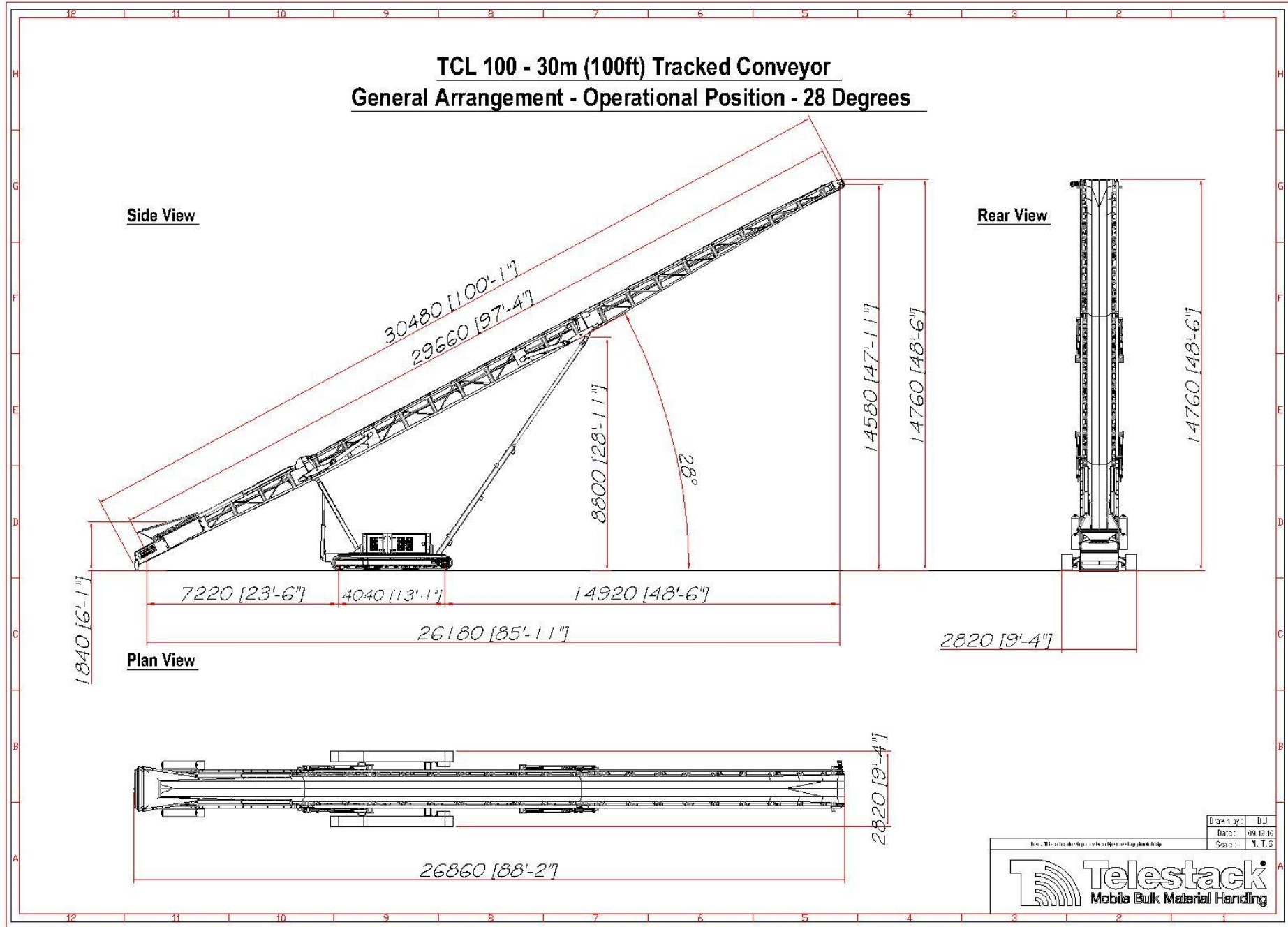
TCL 100 - GENERAL ARRANGEMENT

OPERATIONAL - 22 DEGREES



TCL 100 - GENERAL ARRANGEMENT

OPERATIONAL - 28 DEGREES



Telestack Limited
Bankmore Way East
Omagh, Co.Tyrone
Northern Ireland
BT79 0NZ

Tel: +44 (0) 2882 251100
Fax: +44 (0) 2882 252211
Web: www.telestack.com
Email: Sales@telestack.com



**THE
POWER
TO MOVE
MATERIALS**

The information in this document is for information only and is subject to change without notice. Telestack assumes no liability resulting from errors or omissions in this specification, or from the use of the information contained herein. Due to the continual product development we reserve the right to change specifications without notice. Any product dimensions and figures given out in this specification are for guidance purposes only. These results will vary depending on product, commodity and application. Some or all of the machines in these pictures may be fitted with optional extras. Telestack is a registered trademark.